

---

# KODAK Zi8 Pocket Video Camera



## Extended user guide

[www.kodak.com](http://www.kodak.com)

For interactive tutorials:

[www.kodak.com/go/howto](http://www.kodak.com/go/howto)

For help with your camera:

[www.kodak.com/go/Zi8support](http://www.kodak.com/go/Zi8support)

---

# Kodak

Eastman Kodak Company  
Rochester, New York 14650  
© Kodak, 2009

All screen images are simulated.

Kodak is a trademark of Eastman Kodak Company.

ArcSoft and MediaImpression are trademarks of ArcSoft, Inc.

Apple, iLife, iWeb, MobileMe, iTunes, iPhone, iPod, and Apple TV are trademarks of Apple, Inc.

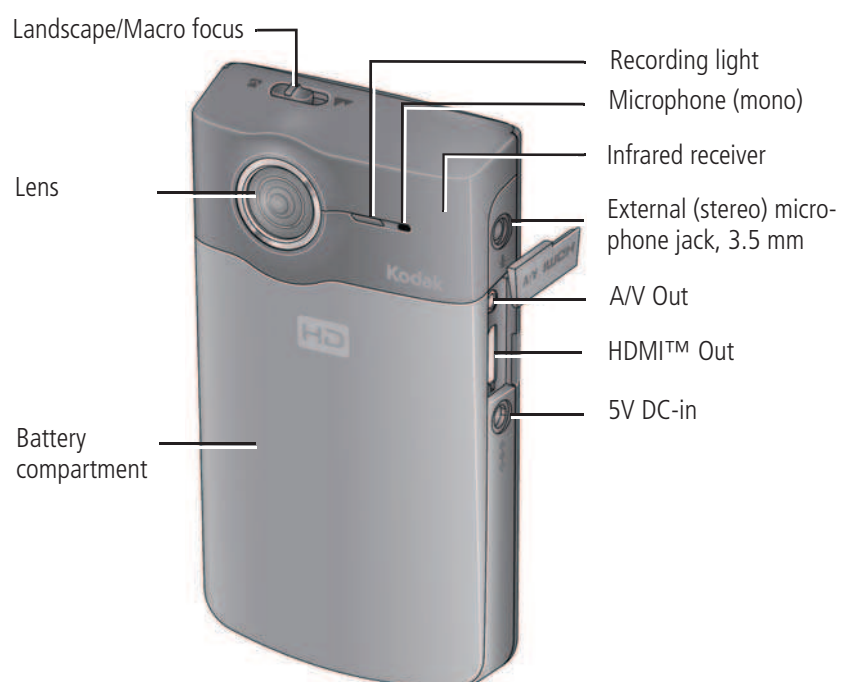
HDMI, the HDMI Logo, and High-Definition Multimedia Interface are trademarks or registered trademarks of HDMI Licensing LLC.

Facebook and the Facebook logo are trademarks of Facebook, Inc.

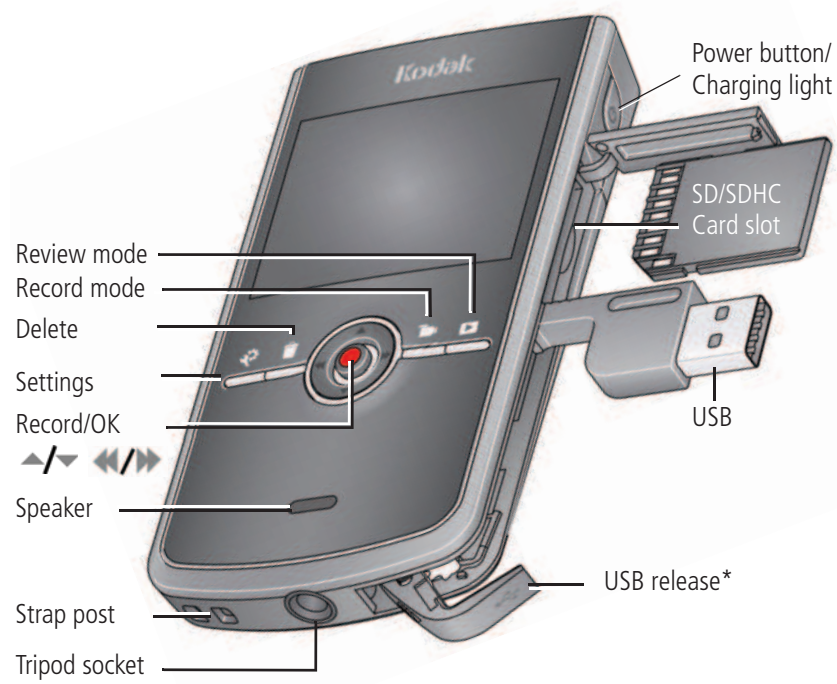
YouTube and the YouTube logo are trademarks of YouTube, LLC.

4H6768\_en

## Front view

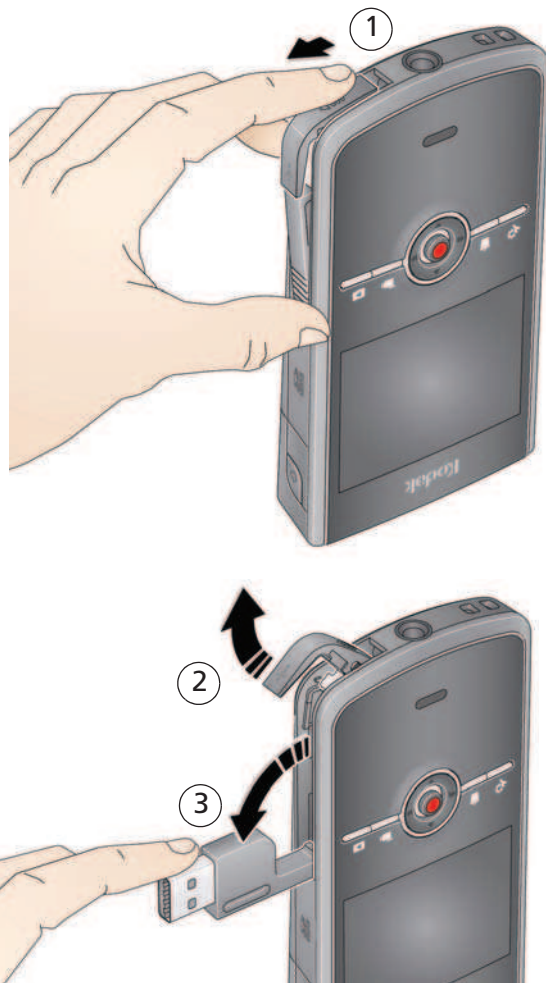


## Back view



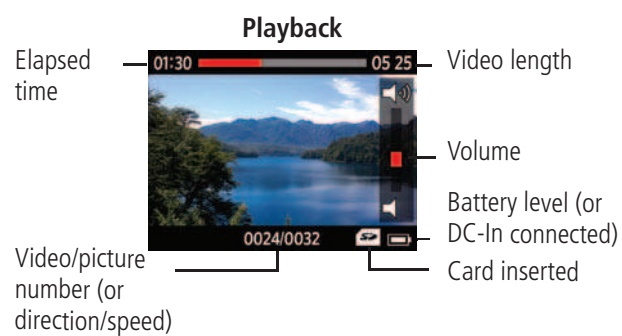
\* Easily access the USB [See page iii](#)

## Accessing the USB



---

## Understanding the status icons



---

**See important Alert icons**    [See page 15](#)

---

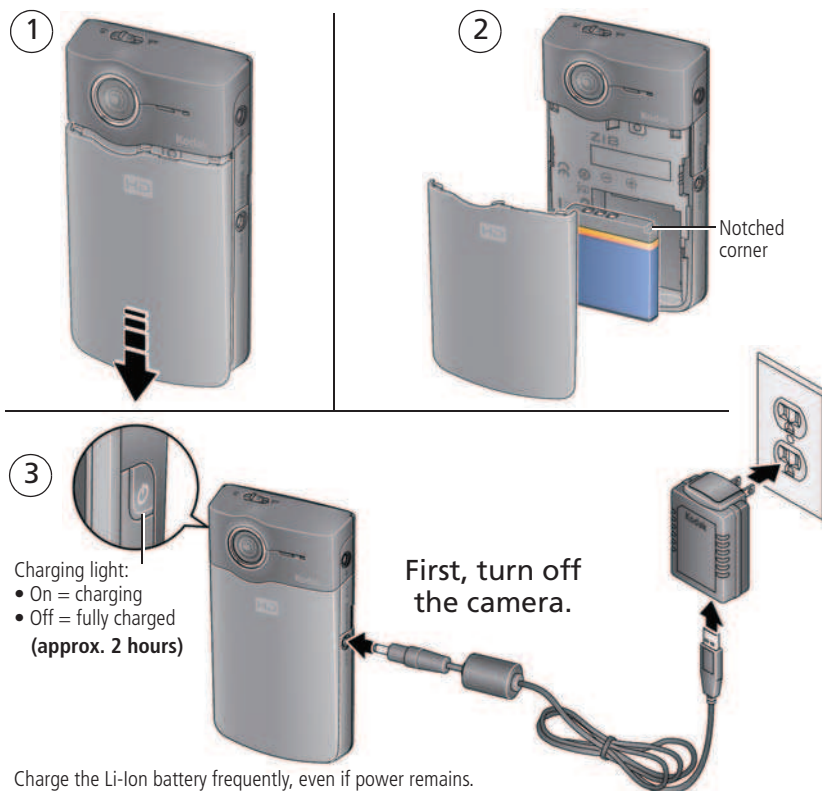
---

## Table of contents

<b>1 Setting up your camera</b>	<b>1</b>
Charging the battery (approximately 2 hours)	1
Charging using USB (approximately 4 hours)	2
Inserting an SD or SDHC Card	3
Connecting the strap	4
<b>2 Using your camera</b>	<b>5</b>
Turning on the camera	5
Setting the date/time	5
Recording videos, taking pictures	6
Playing videos	7
Transferring, editing, sharing online	8
Deleting videos/pictures	9
Viewing on a TV	10
Accessing the settings menu	11
Adjusting the focus range	12
Using the optional remote control	13
Using an external stereo microphone	14
<b>3 Getting help</b>	<b>15</b>
Troubleshooting	15
Getting help on the Web	17
<b>4 Appendix</b>	<b>18</b>
Specifications	18
Safety	19
Care and maintenance	20
Limited warranty	21
Regulatory compliance	23

# 1 Setting up your camera

## Charging the battery (approximately 2 hours)



**See other charging solutions** [See page 2](#)



## Charging using USB (approximately 4 hours)

First, turn off the camera.



Camera USB to computer



Cable to computer



Charging light:  
• On = charging  
• Off = fully charged  
(approx. 4 hours)

Charge the Li-Ion battery frequently, even if power remains.

Access the USB

[See page iii](#)

Purchase extra KLIC-7004 batteries

[www.kodak.com/go/Zi8accessories](http://www.kodak.com/go/Zi8accessories)

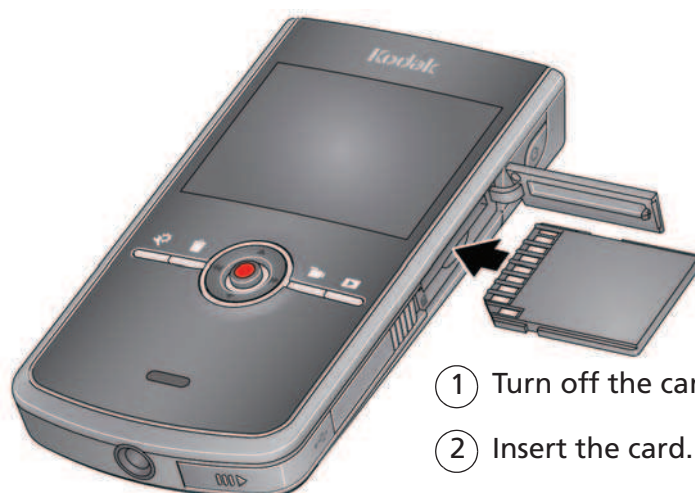
## Inserting an SD or SDHC Card

Your camera has limited internal memory—perfect for a few practice videos/pictures. We strongly suggest that you purchase an SD or SDHC Card to store more. (Maximum supported card size is 32 GB.)



### CAUTION:

A card can only be inserted one way; forcing it may cause damage. Inserting or removing a card while the camera is on may damage the video/pictures, the card, or the camera.



---

Purchase accessories

[www.kodak.com/go/Zi8accessories](http://www.kodak.com/go/Zi8accessories)

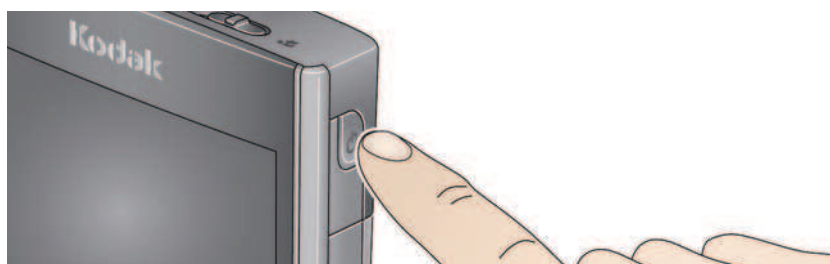
---

## Connecting the strap

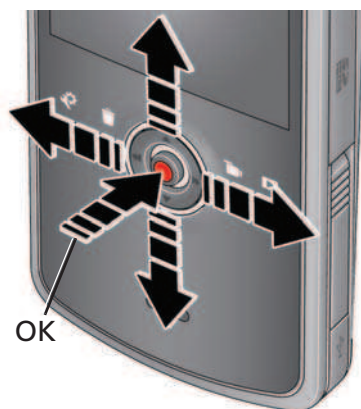


## 2 Using your camera

### Turning on the camera



### Setting the date/time



At the prompt, press OK ● .  
▲/▼ to change current field.  
◀/▶ for previous/next field.  
OK to accept.

[Change date/time later](#) [See page 11](#)

## Recording videos, taking pictures



When you turn on the camera, it's ready to record.



Start/stop recording



Zoom in/out



Enter Recording mode from Review or a menu



Change record modes:

1080p  
best for  
viewing  
on an HDTV

720p/60 fps  
best for  
sports  
and action

720p  
best for  
viewing on a  
computer,  
sharing on  
YouTube™  
and Facebook

WVGA  
best for  
conserving  
memory card  
space;  
Web-ready

Still  
for 5.3 MP  
pictures



Purchase extra cards, batteries

[www.kodak.com/go/Zi8accessories](http://www.kodak.com/go/Zi8accessories)

Use the optional remote control

[See page 13](#)

## Playing videos



Press the Review button for different views:



During playback:

- Press to fast-forward or fast-rewind 2X, 4X, 8X, 16X.
- Press the Review button to play in slow motion.

While paused:

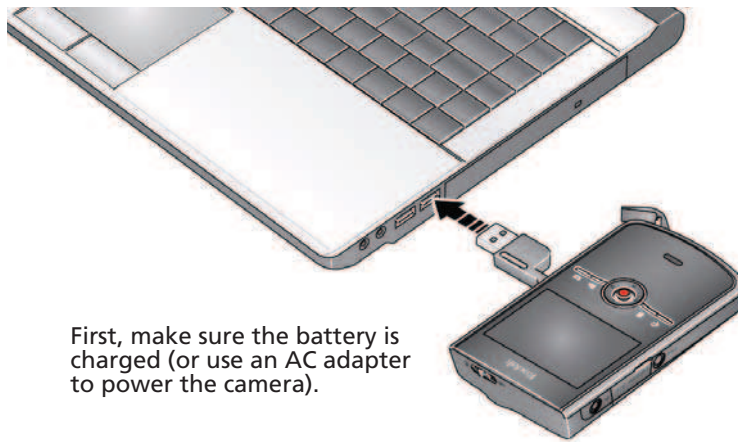
- Press to forward/reverse one frame at a time.

---

Use the optional remote control [See page 13](#)

---

## Transferring, editing, sharing online








First, make sure the battery is charged (or use an AC adapter to power the camera).

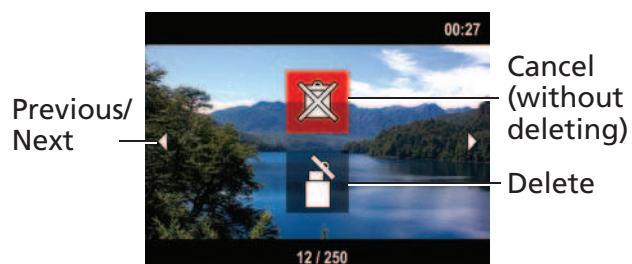
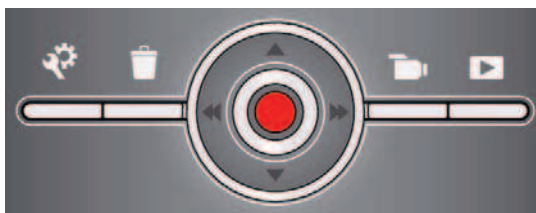
- ① Turn off and connect the camera.  
(It turns on automatically.)
- ② If this is the first time you've connected to this WINDOWS OS-based computer, follow the prompts to install ARCSOFT MEDIAIMPRESSION for KODAK Software. You can then transfer and share videos.

Videos and pictures from the Zi8 Camera can be used with the APPLE ILIFE suite of products to edit, personalize, make DVDs, share via YouTube and APPLE Online Sharing Services (IWEB

Get ArcSoft product support	<a href="http://www.arcsoft.com/support">www.arcsoft.com/support</a>
See HD video system requirements	<a href="http://www.kodak.com/go/HDsysreq">www.kodak.com/go/HDsysreq</a>

## Deleting videos/pictures

- ①  Review
  - ②  Locate
  - ③  Delete
- ④  to highlight a choice, then press OK 



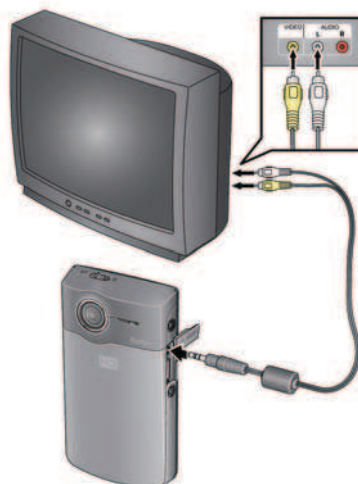


## Viewing on a TV

### HDMI Cable



### AV Cable



Set TV input to match your connection.  
For stereo playback, use the HDMI cable.\*

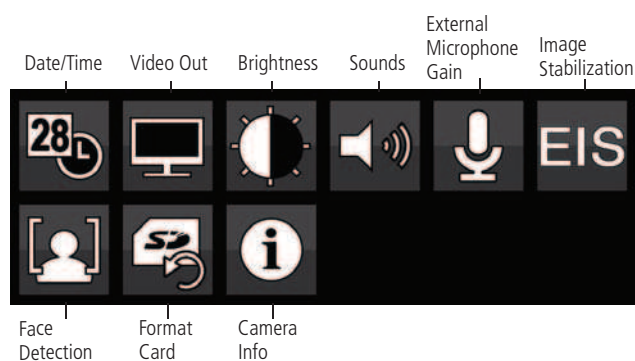
Set Video Out (NTSC/PAL)	<a href="#">See page 11</a>
Purchase accessories	<a href="http://www.kodak.com/go/Zi8accessories">www.kodak.com/go/Zi8accessories</a>
* To record in stereo, use an optional external stereo microphone	<a href="#">See page 14</a>

## Accessing the settings menu

Press the Settings button to access the Settings menu.



Settings menu



**Date/Time**—Set the date/time.

**Video Out**—Choose the setting (NTSC, PAL) for your region.

**Brightness**—Set LCD brightness.

**Sounds**—Turn sounds On/Off.

**External Microphone Gain**—Choose sensitivity of an external microphone.

**Image Stabilization**—Turn on to reduce video blur.

**Format Card**—Erase, format the card.

**Face Detection**—Turn face detection on/off.

**Camera Info**—View firmware and ARCSOFT Software versions.

## Adjusting the focus range



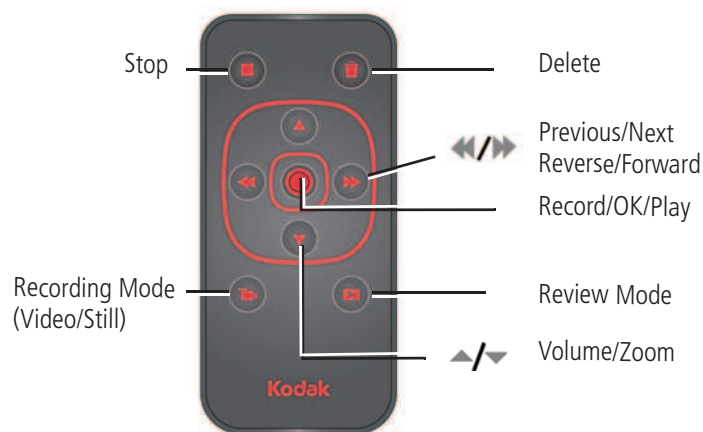
## Using the optional remote control

Use the optional remote control just as you would use the on-camera buttons—to start/stop recording, review videos and pictures, and more. Go to [www.kodak.com/go/Zi8accessories](http://www.kodak.com/go/Zi8accessories).

### Remove the tab to activate the battery



### Using the remote control



## **Using an external stereo microphone**







Your camera has a built-in mono microphone. Use an external stereo microphone (optional, with a 3.5 mm jack) to enhance your audio/video experience.

NOTE: To adjust the audio gain (external microphone sensitivity), [see page 11](#).



## 3 Getting help

### Troubleshooting

Icon	Solution
	<ul style="list-style-type: none"><li>■ Low battery. Charge the battery.</li></ul>
	<ul style="list-style-type: none"><li>■ Card or internal memory is nearly full. Transfer videos/pictures to your computer.</li><li>■ Corrupt or unusable card. Transfer videos/pictures to your computer, then format (erase) the card in the camera or card reader.</li></ul>
	<ul style="list-style-type: none"><li>■ Internal memory is full. Transfer videos/pictures to your computer, or use an SD/SDHC card to take more videos/pictures.</li></ul>
	<ul style="list-style-type: none"><li>■ Card is full. Transfer videos/pictures to your computer or use another card.</li></ul>
	<ul style="list-style-type: none"><li>■ Unrecognized file. Transfer videos/pictures to your computer.</li></ul>
	<ul style="list-style-type: none"><li>■ An error has occurred. Transfer videos/pictures to your computer, then format (erase) the card or internal memory.</li></ul>

Problem	Solution
Camera will not turn on.	<ul style="list-style-type: none"> <li>■ Ensure that the battery is correctly inserted and charged.</li> </ul>
Videos are choppy or jumpy when played on a computer.	<ul style="list-style-type: none"> <li>■ Use ARCSOFT MEDIAIMPRESSION Software for video playback.</li> <li>■ Ensure that the computer system requirements are met. Go to <a href="http://www.arcsoft.com/support">www.arcsoft.com/support</a>.</li> </ul>
Videos are blurry.	<ul style="list-style-type: none"> <li>■ Check the Landscape/Macro focus button (<a href="#">see page 12</a>).</li> <li>■ Ensure that the lens is clean.</li> <li>■ Ensure that the subject is at least 1 m (3.3 ft) from the lens.</li> <li>■ Turn on Image Stabilization (<a href="#">see page 11</a>).</li> <li>■ When using a tripod, turn off Image Stabilization.</li> </ul>
Videos do not play on a TV.	<ul style="list-style-type: none"> <li>■ Ensure that an HDMI or AV Cable is properly connected directly to the TV input (<a href="#">see page 10</a>).</li> <li>■ Ensure that the TV menu settings are correct for an HDMI or AV connection.</li> <li>■ Ensure that the Video Out is set correctly (<a href="#">see page 11</a>).</li> </ul>
Videos are in low resolution and/or are not saved.	<ul style="list-style-type: none"> <li>■ If no card is inserted and the camera is powered by the AC adapter, then videos are taken in low resolution and are not saved. (The camera is in Demo mode.) Insert a card or unplug the AC adapter.</li> </ul>
Camera will not work with optional remote control.	<ul style="list-style-type: none"> <li>■ Ensure that the battery is correctly inserted in the remote control and camera.</li> <li>■ Ensure that the battery is correctly inserted in the camera.</li> <li>■ Ensure that the camera infrared receiver (above the lens) and the remote control have an unobstructed path.</li> </ul>
Solve problems with ARCSOFT Software.	<ul style="list-style-type: none"> <li>■ Go to <a href="http://www.arcsoft.com/support">www.arcsoft.com/support</a>. (For other applications, go to their support sites.)</li> </ul>

NOTE: If problems persist, go to [www.kodak.com/go/Zi8support](http://www.kodak.com/go/Zi8support) and click Step-by-Step Solutions & Repair.

## Getting help on the Web

### Camera

Chat, email, write, or phone, Kodak (Chat not available in all languages.)	<a href="http://www.kodak.com/go/contact">www.kodak.com/go/contact</a>
Get support for your product (FAQs, troubleshooting information, arrange for repairs, etc.)	<a href="http://www.kodak.com/go/Zi8support">www.kodak.com/go/Zi8support</a>
Get support for accessories	<a href="http://www.kodak.com/go/support">www.kodak.com/go/support</a>
Purchase camera accessories (lenses, cards, etc.)	<a href="http://www.kodak.com/go/Zi8accessories">www.kodak.com/go/Zi8accessories</a>
Download the latest camera firmware and software	<a href="http://www.kodak.com/go/Zi8downloads">www.kodak.com/go/Zi8downloads</a>
See online demonstrations of your camera	<a href="http://www.kodak.com/go/howto">www.kodak.com/go/howto</a>
Register your camera	<a href="http://www.kodak.com/go/register">www.kodak.com/go/register</a>

### Software

Get information on ARCSOFT Software	<a href="http://www.arcsoft.com/support">www.arcsoft.com/support</a>
Get help with the WINDOWS OS and working with digital pictures	<a href="http://www.kodak.com/go/pcbasics">www.kodak.com/go/pcbasics</a>



## 4 Appendix


### Specifications

**Image Sensor**—1/2.5-type, 5 MP, CMOS

**Lens**—6.3 mm, f/2.8, fixed focus; 35 mm equivalent: 61 mm (1080p), 46 mm (720p/60 fps, 720p, WVGA), 42 mm (still)

**Zoom**—4X digital

**LCD**—6.35 cm (2.5 in.); 230K pixels

**Image Storage**—128 MB internal memory (approximately 20 MB available for image storage. 1 MB equals one million bytes); optional SD/SDHC Card  (The SD logo is a trademark of the SD Card Association.) Maximum supported size: 32 GB SDHC.

**Focusing System**—Fixed

**Focus Modes**—Normal (Landscape), Macro

**Focus Range**—Normal: 100 cm (39.4 in.)–infinity; Macro: 15 cm

**White Balance**—Auto

**Exposure**—Auto

**File Format**—Still: JPEG with Kodak EXIF; Video: H.264 (MOV);  
Audio: MPEG-4 AAC LC

- HD (16:9) 30 fps: 1920 x 1080 @ 30 fps
- HD (16:9) 60 fps: 1280 x 720 @ 60 fps
- HD (16:9) 30 fps: 1280 x 720 @ 30 fps
- WVGA (16:9) 30 fps: 848 x 480 @ 30 fps
- Still (16:9): 5.3 MP picture

**Shutter Speed**—Auto

[www.kodak.com/go/support](http://www.kodak.com/go/support)

**Video image stabilization**—Digital, in all video modes

**Microphone**—Mono, and external stereo microphone jack (3.5 mm)

**ISO**—Automatically set (50–800)

**Speaker**—Yes

**I/O Interface**—USB 2.0 (high speed); component output; HDMI

**Tripod Mount**—1/4-in. standard

**Power**—KODAK 5V AC adapter, or KODAK Li-Ion Rechargeable Digital Camera Battery KLIC-7004

**Battery life**—Approximately 90 minutes in video recording mode, 720p @ 30 fps

**Size**—21.5 x 113.2 x 62 mm (0.8 x 4.5 x 2.4 in.)

**Weight**—110 g (3.9 oz) without battery

## Safety



### CAUTION:

**Do not disassemble this product; there are no user-serviceable parts inside. Refer servicing to qualified service personnel. KODAK AC Adapters and battery chargers are intended for indoor use only. The use of controls, adjustments, or procedures other than those specified herein may result in exposure to shock and/or electrical or mechanical hazards. If the LCD breaks, do not touch the glass or liquid. Contact Kodak customer support.**

- The use of an accessory that is not recommended by Kodak may cause fire, electric shock, or injury. For approved accessories, go to [www.kodak.com/go/accessories](http://www.kodak.com/go/accessories).
- Use only a USB-certified computer equipped with a current-limiting motherboard. Contact your computer manufacturer if you have questions.
- If using this product in an airplane, observe all instructions of the airline.
- When removing batteries, allow them to cool; they may be hot.
- Follow all warnings and instructions supplied by the battery manufacturer.

- Use only batteries approved for this product to avoid risk of explosion.
- Keep batteries out of the reach of children.
- Do not allow batteries to touch metal objects, including coins. Otherwise, a battery may short circuit, discharge energy, become hot, or leak.
- Do not disassemble, install backward, or expose batteries to liquid, moisture, fire, or extreme temperature.
- Remove the batteries when the product is stored. In the unlikely event that battery fluid leaks inside the product, contact Kodak customer support.
- In the unlikely event that battery fluid leaks onto your skin, wash immediately with water and contact your local health provider. For additional health-related information, contact your local Kodak customer support.
- Go to [www.kodak.com/go/REACH](http://www.kodak.com/go/REACH) for information about the presence of substances included on the candidate list according to article 59(1) of Regulation (EC) No. 1907/2006 (REACH).
- Dispose of batteries according to local and national regulations. Go to [www.kodak.com/go/kes](http://www.kodak.com/go/kes).
- For more information, go to [www.kodak.com/go/batteries](http://www.kodak.com/go/batteries).

## Care and maintenance

- If you suspect water has gotten inside the camera, remove the battery and card. Allow all components to air-dry for at least 24 hours before using the camera.
- Blow gently on the lens or LCD to remove dust and dirt. Wipe gently with a soft, lint-free cloth or an untreated lens-cleaning tissue. Do not use cleaning solutions unless designed specifically for camera lenses. Do not allow chemicals, such as suntan lotion, to contact painted surfaces.
- Service agreements may be available in your country. Contact a dealer of KODAK Products for more information.
- For camera disposal or recycling information, contact your local authorities. In the

US, go to the Electronics Industry Alliance Web site at [www.eiae.org](http://www.eiae.org) or go to Kodak at [www.kodak.com/go/Zi8support](http://www.kodak.com/go/Zi8support).

## Limited warranty

Kodak warrants its digital cameras and accessories (excluding batteries) to be free from malfunctions and defects in both materials and workmanship for the warranty period specified on your KODAK Product packaging. Retain the original dated sales receipt. Proof of purchase date is required with any request for warranty repair.

### Limited warranty coverage

Warranty service is only available from within the country where the Products were originally purchased. You may be required to ship Products, at your expense, to the authorized service facility for the country where the Products were purchased. Kodak will repair or replace Products if they fail to function properly during the warranty period, subject to any conditions and/or limitations stated herein. Warranty service will include all labor as well as any necessary adjustments and/or replacement parts. If Kodak is unable to repair or replace a Product, Kodak will, at its option, refund the purchase price paid for the Product provided the Product has been returned to Kodak along with proof of the purchase price paid. Repair, replacement, or refund of the purchase price are the sole remedies under the warranty. If replacement parts are used in making repairs, those parts may be remanufactured, or may contain remanufactured materials. If it is necessary to replace the entire Product, it may be replaced with a remanufactured Product. Remanufactured Products, parts and materials are warranted for the remaining warranty term of the original Product, or 90 days after the date of repair or replacement, whichever is longer.

### Limitations

This warranty does not cover circumstances beyond Kodak's control. This warranty does not apply when failure is due to shipping damage, accident, alteration, modification, unauthorized service, misuse, abuse, use with incompatible accessories or attachments (such as third party ink or ink tanks), failure to follow Kodak's operation, maintenance or repacking instructions, failure to use items supplied by Kodak (such as adapters and cables), or claims made after the duration of this

warranty. Kodak makes no other express or implied warranty for this product. In the event that the exclusion of any implied warranty is ineffective under the law, the duration of the implied warranty will be the length of the express warranty period specified on your KODAK Product packaging. The option of repair, replacement, or refund is Kodak's only obligation. Kodak will not be responsible for any special, consequential or incidental damages resulting from the sale, purchase, or use of this product regardless of the cause. Liability for any special, consequential or incidental damages (including but not limited to loss of revenue or profit, downtime costs, loss of the use of the equipment, cost of substitute equipment, facilities or services, or claims of your customers for such damages resulting from the purchase, use, or failure of the Product), regardless of cause or for breach of any written or implied warranty is expressly disclaimed.

**Your rights**

Some states or jurisdictions do not allow exclusion or limitation of incidental or consequential damages, so the above limitation or exclusion may not apply to you. Some states or jurisdictions do not allow limitations on how long an implied warranty lasts, so the above limitation may not apply to you. This warranty gives you specific rights, and you may have other rights which vary from state to state or by jurisdiction.

**Outside the United States and Canada**

In countries other than the United States and Canada, the terms and conditions of this warranty may be different. Unless a specific Kodak warranty is communicated to the purchaser in writing by a Kodak company, no warranty or liability exists beyond any minimum requirements imposed by law, even though defect, damage, or loss may be by negligence or other act.

## Regulatory compliance

### FCC compliance and advisory

This equipment has been tested and found to comply with the limits for a Class B digital device, pursuant to Part 15 of the FCC Rules. These limits are designed to provide reasonable protection against harmful interference in a residential installation. This equipment generates, uses, and can radiate radio frequency energy and, if not installed or used in accordance with the instructions, may cause harmful interference to radio communications. However, there is no guarantee that interference will not occur in a particular installation. If this equipment does cause harmful interference to radio or television reception, which can be determined by turning the equipment off and on, the user is encouraged to try to correct the interference by one or more of the following measures: 1) reorient or relocate the receiving antenna; 2) increase the separation between the equipment and the receiver; 3) connect the equipment to an outlet on a circuit different from that to which the receiver is connected; 4) consult the dealer or an experienced radio/TV technician for additional suggestions. Any changes or modifications not expressly approved by the party responsible for compliance could void the user's authority to operate the equipment. Where shielded interface cables have been provided with the product or specified additional components or accessories elsewhere defined to be used with the installation of the product, they must be used in order to ensure compliance with FCC regulation.

This device complies with Industry Canada RSS-210 and FCC Rules. Operation is subject to the following two conditions: (1) this device may not cause harmful interference, and (2) this device must accept any interference received, including interference that may cause undesired operation.

### CE

Hereby, Eastman Kodak Company declares that this KODAK Product is in compliance with the essential requirements and other relevant provisions of Directive 1999/5/E.

### Waste Electrical and Electronic Equipment labeling/battery disposal



In Europe: For human/environmental protection, it is your responsibility to dispose of this equipment and batteries at a collection facility established for this purpose (separate from municipal waste.) For more information, contact your retailer, collection facility, or appropriate local authorities; or go to [www.kodak.com/go/recycle](http://www.kodak.com/go/recycle). Product weight: 110 g (3.9 oz)



### VCCI Class B ITE

この装置は、情報処理装置等電波障害自主規制協議会（VCCI）の基準に基づくクラスB情報技術装置です。この装置は、家庭環境で使用することを目的としていますが、この装置がラジオやテレビジョン受信機に近接して使用されると、受信障害を引き起こすことがあります。  
取扱説明書に従って正しい取り扱いをして下さい。

### Korean Class B ITE

8급 기기 (가정용 방송통신기기)	이 기기는 가정용(B급)으로 전자파적합등록을 한 기기로서 주로 가정에서 사용하는 것을 목적 으로 하며, 모든 지역에서 사용할 수 있습니다.
-----------------------	---

### Russian GOST-R



Eastman Kodak  
Company

Фотокамера изготовлена в Китае; остальные элементы -  
АЮ-40 в соответствии с маркировкой.

## China RoHS

### 环保使用期限 (EPUP)

在中国大陆，该值表示产品中存在的任何危险物质不得释放，以免危及人身健康、财产或环境的时间期限（以年计）。该值根据明中所规定的产品正常使用而定。

有毒有害物质或元素名称及含量标识表						
部件名称	有毒有害物质或元素					
	铅	汞	镉	六价铬	多溴联苯	多溴二苯醚
数码摄像机电路板组件	×	○	○	○	○	○
锂电池	×	○	○	○	○	○
交流变压器	×	○	○	○	○	○

○：表示该有毒有害物质在该部件所有均质材料中的含量均在SJ/T 11363-2006规定的限量要求以下。

×：表示该有毒有害物质至少在该部件的某一均质材料中的含量超出SJ/T 11363-2006规定的限量要求。



HDMI 电缆 (HDMI Cable)



音频/视频电缆 (Audio/Video Cable)

## Canadian DOC statement

**DOC Class B Compliance**—This Class B digital apparatus complies with Canadian ICES-003.

**Observation des normes-Classe B**—Cet appareil numérique de la classe B est conforme à la norme NMB-003 du Canada.

## Australian C-Tick



N137

## MPEG-4

Use of this product in any manner that complies with the MPEG-4 visual standard is prohibited, except for use by a consumer engaging in personal and non-commercial activities.



---

## Index

### A

accessing settings, 9, 11  
accessing the USB, iii  
accessories, purchase, 17

### B

battery, loading, charging, 1

### C

card, loading, 3  
care and maintenance, 20  
clock, setting, 5  
close-up/landscape focus, 12  
connecting  
    strap, 4  
    to a computer, 8  
    to a TV, 10

### D

date setting, 5  
disposal, recycling, 21

### E

editing videos, 8  
external microphone jack, i

### F

focus switch, 12

### H

help, Web links, troubleshooting, 15

### I

icons, iv

### K

Kodak Web sites, 15

### L

landscape/close-up focus, 12  
lens, cleaning, 20  
loading batteries, 1

### M

maintenance, camera, 20  
memory card, loading, 3  
menus, 9, 11  
microphone, i  
microphone, stereo, 14

### O

on/off, 5

### P

playing a video, 7  
playing on a TV, 10

### R

recording, 6  
recycling, disposal, 21  
remote control, 13  
repair, 17

## *Index*

---

### **S**

- SD/SDHC card loading, 3
- setting date and time, 5
- setting up the camera, 1
- settings, menu, 9, 11
- sharing online, 8
- speaker, ii
- specifications, 18
- status icons, iv
- stereo microphone, 14
- strap, connecting, 4

### **T**

- taking a video, picture, 6
- time, setting, 5
- tips, care, & maintenance, 20
- transferring videos, 8
- troubleshooting, 15
- turning on camera, 5
- TV playback, 10

### **U**

- URLs, Kodak Web sites, 15
- USB, iii

### **W**

- warranty, 21